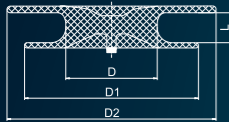


Ordering Information

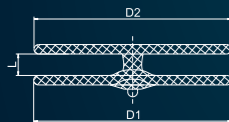
CeraFlex™

CeraFlex™ ASD



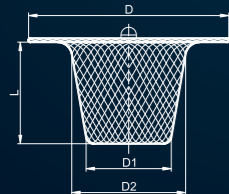
Code	[D]Waist Diameter (mm)	[D1]Right Disc Diameter (mm)	[D2]Left Disc Diameter (mm)	[L]Waist Length (mm)	Minimum Recommended Sheath Size SteerEase™ (Fr.)
LT-ASDf-06	6	14	18	4	SFA8F-f
LT-ASDf-08	8	16	20	4	SFA8F-f
LT-ASDf-10	10	18	22	4	SFA8F-f
LT-ASDf-12	12	22	26	4	SFA9F-f
LT-ASDf-14	14	24	28	4	SFA10F-f
LT-ASDf-16	16	26	30	4	SFA10F-f
LT-ASDf-18	18	28	32	4	SFA10F-f
LT-ASDf-20	20	30	34	4	SFA12F-f
LT-ASDf-22	22	32	36	4	SFA12F-f
LT-ASDf-24	24	34	38	4	SFA12F-f
LT-ASDf-26	26	36	40	4	SFA12F-f
LT-ASDf-28	28	38	42	4	SFA12F-f
LT-ASDf-30	30	40	44	4	SFA14F-f
LT-ASDf-32	32	42	46	4	SFA14F-f

CeraFlex™ MF-ASD



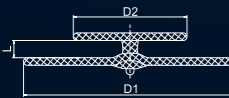
Code	[D1]Right Disc Diameter (mm)	[D2]Left Disc Diameter (mm)	[L]Waist Length (mm)	Minimum Recommended Sheath Size SteerEase™ (Fr.)
LT-ASDf-MF-1818	18	18	3	SFA9F-f
LT-ASDf-MF-2518	25	18	3	SFA10F-f
LT-ASDf-MF-2525	25	25	3	SFA10F-f
LT-ASDf-MF-3030	30	30	3	SFA12F-f
LT-ASDf-MF-3525	35	25	3	SFA14F-f
LT-ASDf-MF-3535	35	35	3	SFA14F-f
LT-ASDf-MF-4040	40	40	3	SFA14F-f

CeraFlex™ PDA



Code	[D]Retention Skirt (mm)	[D1]Proximal Diameter (mm)	[D2]Distal Diameter (mm)	[L]Waist Length (mm)	Minimum Recommended Sheath Size SteerEase™ (Fr.)
LT-PDAf-0406	10	4	6	7	SFP6F-f
LT-PDAf-0608	12	6	8	7	SFP7F-f
LT-PDAf-0810	14	8	10	7	SFP7F-f
LT-PDAf-1012	16	10	12	7	SFP8F-f
LT-PDAf-1214	20	12	14	7	SFP9F-f
LT-PDAf-1416	22	14	16	8	SFP9F-f
LT-PDAf-1618	24	16	18	8	SFP10F-f
LT-PDAf-1820	26	18	20	9	SFP12F-f
LT-PDAf-2022	28	20	22	9	SFP12F-f
LT-PDAf-2224	30	22	24	10	SFP14F-f

CeraFlex™ PFO



Code	[D1]Right Disc Diameter (mm)	[D2]Left Disc Diameter (mm)	[L]Waist Length (mm)	Minimum Recommended Sheath Size SteerEase™ (Fr.)
LT-PFOf-1818	18	18	3	SFA9F-f
LT-PFOf-2518	25	18	3	SFA10F-f
LT-PFOf-2525	25	25	3	SFA10F-f
LT-PFOf-3025	30	25	3	SFA12F-f
LT-PFOf-3030	30	30	3	SFA12F-f
LT-PFOf-3525	35	25	3	SFA14F-f



Operation Procedure Superiority

Lifetech Scientific (Shenzhen) Co., Ltd.

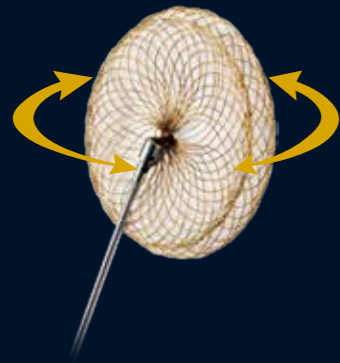
Add: Floor 1-5, Cybio Electronic Building, Langshan 2nd Street, North Area of High-tech Park, Nanshan District, Shenzhen 518057, P. R. China
 Tel: +86-755-86026250 Fax: +86-755-86026251
 Email: marketing@lifetechmed.com
 Web: www.lifetechmed.com

EU authorized representative:
 LifeTech Scientific (Europe) Cooperatief U.A.
 Olijmolenstraat 60, 6416CB Heerlen, the Netherlands

2020-EN-1.0

BENEFIT

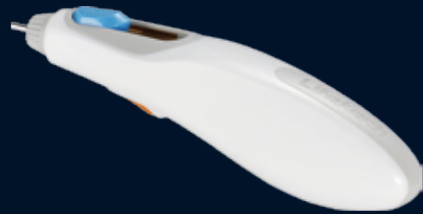
Innovative Delivery System



- 360 flexible rotation, accurate positioning and safe detachment ⁽¹⁾



- Pre-mounted delivery system, shorter operation time



- Lock / release mechanism, easy and convenient operation ⁽¹⁾



- Soft delivery cable, minimizing the unwanted damage of heart or vessel tissue

Excellent Braided Structure

- Decrease the chance of clot formation on the left atrial disc with braided technology
- Offer better adaptation in the interatrial septum with flexible disc

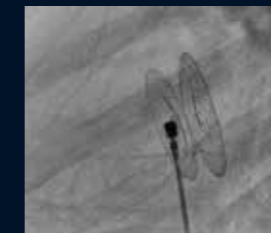
Titanium Nitride (TiN) Coating Technology

- Prevent nickel leaching ⁽²⁾
- Accelerate endothelialization and close defect rapidly
- Soften nitinol material and provide a more compliant and flexible implant



Clinical Application

The CeraFlex™ wire loop connection system offers an accurate final positioning without the adverse tension or stress caused by the delivery cable.



Before release



After release

Reference

(1)M.A. Astarcioglu, M. Kalcik, etc., Ceraflex™ versus Amplatzer occluder for secundum atrial septal defect closure - Multicenter clinical experience, Herz. 2015 Apr.; 40 Suppl 2:146-50. doi: 10.1007/s00059-014-4192-0.

(2)D.Y. Zhang, W.J. Zeng, Z.J. Zi, and P.K. Chu, Fabrication of graded TiN coatings on nitinol occluders and effects on *in vivo* nickel release, Materials Science and Engineering C. 29 (2009), 1599-1603.