

## FlowLine Bipore<sup>®</sup>

### Prótesis Vascular de ePTFE

- Exclusivo diseño Bipore<sup>®</sup> con dos longitudes fibrilares distintas para una mínima trombogenicidad
- Una envoltura de refuerzo adicional de ePTFE garantiza una mayor retención de la sutura y una elevada resistencia a la ruptura
- Línea de guía exclusiva que indica el diámetro y el espesor de la pared de la prótesis
- Refuerzo helicoidal para una mejor resistencia frente a acodamientos y compresión
- Excelentes cualidades para el manejo, adaptación y sutura de la prótesis
- Extracción fácil y sencilla del refuerzo espiral

# FlowLine Bipore®

## Prótesis Vascular de ePTFE

### Información para Pedidos

Envío rápido y fiable en 24 horas en Europa.

Contacte con su oficina local: +34 91 648 70 20

#### Pared fina

#### Pared fina con refuerzo espiral

Longitud (cm)	Diámetro (mm)	Nº Catálogo	Nº Catálogo
10	5	10TW1005N	10TW1005S
20	6	10TW2006N	-
20	7	10TW2007N	-
20	8	10TW2008N	-
40	5	10TW4005N	10TW4005S
50	6	10TW5006N	10TW5006S
50	7	10TW5007N	10TW5007S
50	8	10TW5008N	10TW5008S
70	5	10TW7005N	10TW7005S
80	6	10TW8006N	10TW8006S
80	7	10TW8007N	10TW8007S
80	8	10TW8008N	10TW8008S

#### Pared estándar

#### Pared estándar con refuerzo espiral

Longitud (cm)	Diámetro (mm)	Nº Catálogo	Nº Catálogo
20	6	10SW2006N	-
20	7	10SW2007N	-
40	5	10SW4005N	-
50	6	10SW5006N	10SW5006S
50	7	10SW5007N	10SW5007S
50	8	10SW5008N	10SW5008S
70	5	10SW7005N	-
80	6	10SW8006N	10SW8006S
80	7	10SW8007N	10SW8007S
80	8	10SW8008N	10SW8008S

# JOTEC®

SOLUTIONS FOR VASCULAR DISEASE

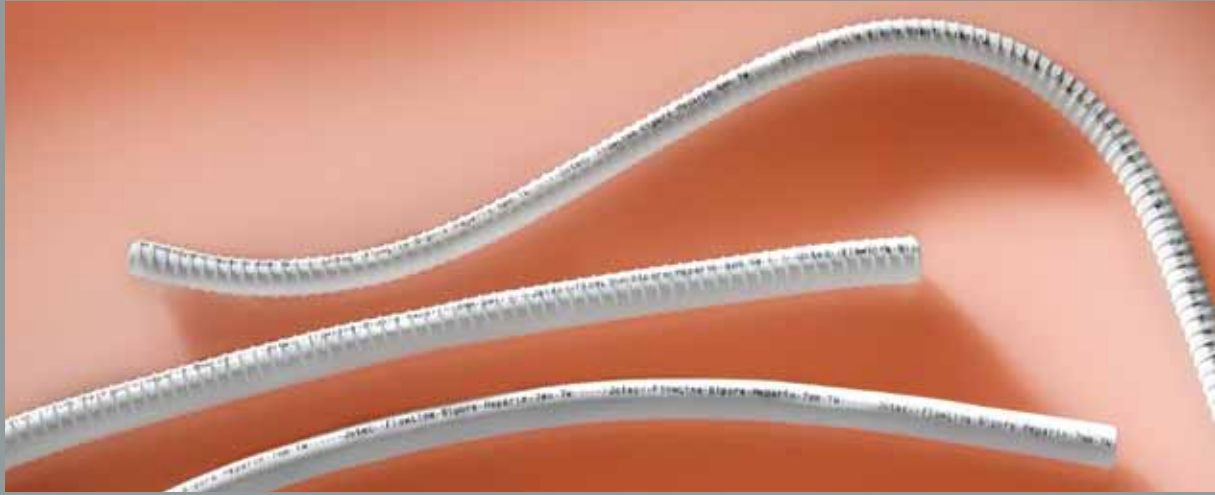
**JOTEC GmbH**  
Lotzenäcker 23  
D-72379 Hechingen  
T +49 (0) 74 71 / 922 - 0  
F +49 (0) 74 71 / 922 - 100  
www.jotec.net

**JOTEC AG**  
Luzernerstr. 91  
CH-5630 Muri  
T +41 (0) 56 670 91 - 00  
F +41 (0) 56 670 91 - 02

**JOTEC s.r.l.**  
Vicolo Valtellina n.15  
I-20092 Cinisello Balsamo (Mi)  
T +39 02 30310061  
F +39 02 66014455

**JOTEC CARDIOVASCULAR SL**  
Parque Empresarial San Fernando  
Edificio Italia – planta baja  
E-28830 San Fernando de Henares, Madrid  
T +34 (0) 91 - 648 70 20  
F +34 (0) 91 - 656 17 73





## **FlowLine Bipore**<sup>®</sup> **HEPARIN**

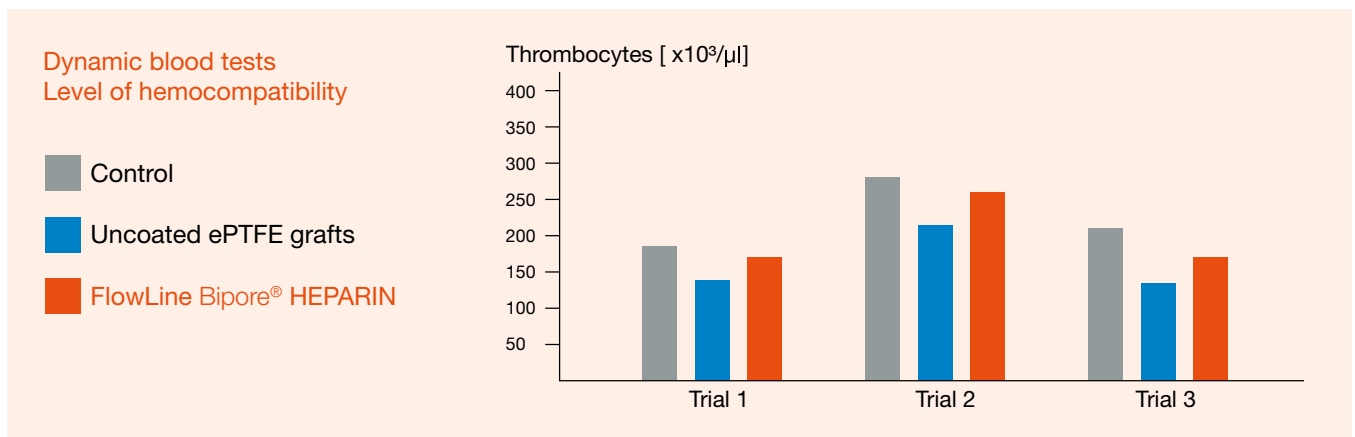
ePTFE Vascular Graft with Heparin Coating

# FlowLine Bipore<sup>®</sup> HEPARIN

## ePTFE Vascular Graft with Heparin Coating

### Thromboresistant lumen surface for increased graft patency

Covalent bonding and ionic interactions binds Heparin durable to the lumen surface of the FlowLine Bipore<sup>®</sup> HEPARIN graft. This innovative bonding technique imitates the antithrombogenic effect of the natural endothelium and leads to increased hemocompatibility.

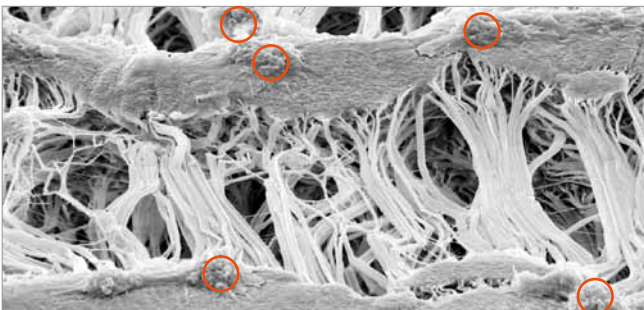


#### Dynamic blood tests confirm high level of hemocompatibility<sup>1</sup>

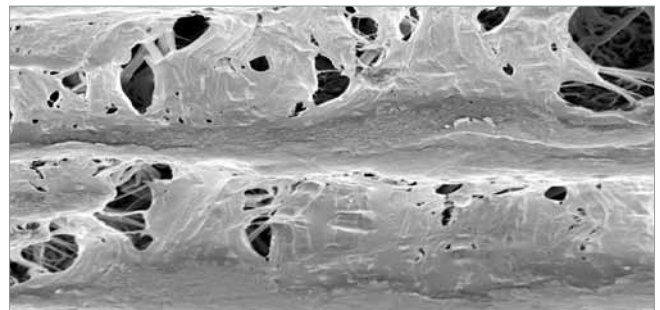
The number of free thrombocytes in blood being exposed to the lumen of FlowLine Bipore<sup>®</sup> HEPARIN is comparable to the control group.

In uncoated ePTFE grafts there is a decrease in the number of free platelets due to thrombus formation on the lumen surface.

The microscopic image clearly illustrates the advantage of the FlowLine Bipore<sup>®</sup> HEPARIN grafts over uncoated ePTFE grafts.



Uncoated ePTFE graft:  
Thrombus formation after 2 hours of blood contact<sup>1</sup>



FlowLine Bipore<sup>®</sup> HEPARIN:  
Significantly reduced platelet adhesion<sup>1</sup>

<sup>1</sup> In vitro studies/dynamic blood test in Chandler Loop by Dr. H.P. Wendel:  
Clinical Research Laboratory, Clinic for Thoracic, Cardiac and Vascular Surgery, University Hospital Tübingen



Unique guideline indicating graft diameter and wall thickness



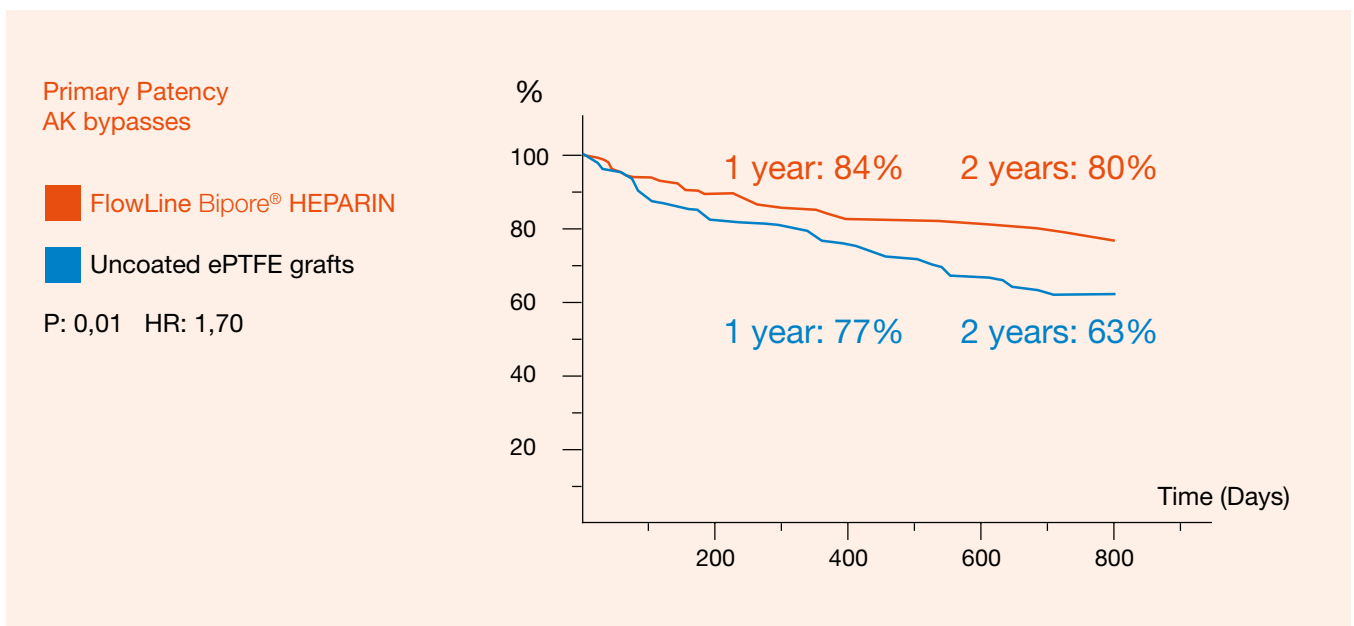
The external reinforcement can easily be removed if required

## FlowLine Bipore® HEPARIN provides better patient care

- Excellent and pliable handling and suture behaviour
- Additional ePTFE wrap for enhanced suture retention and high burst strength
- Helical reinforcement ensuring high kinking and compression resistance

## The proven alternative with sustained antithrombogenic effect

This results from a prospective, open label, randomised multicentre study comparing FlowLine Bipore® HEPARIN with uncoated ePTFE grafts. More than 500 patients were enrolled and randomised to 6mm, reinforced FlowLine Bipore® HEPARIN and uncoated ePTFE grafts.



„... there is a significant difference [...] in favour of the FlowLine Bipore HEPARIN grafts.“

# FlowLine Bipore<sup>®</sup> HEPARIN

## ePTFE Vascular Graft with Heparin Coating

### Ordering information

Quick and reliable delivery of standard products in Europe within 24 hours.

Call our central office: +49 (0) 7471 / 922-0

### Thin Wall      Thin Wall with spiral reinforcement

Length (cm)	Diameter (mm)	Catalogue No.	Catalogue No.
40	5	15TW4005N	15TW4005S
50	6	15TW5006N	15TW5006S
50	7	15TW5007N	15TW5007S
50	8	15TW5008N	15TW5008S
70	5	15TW7005N	15TW7005S
80	6	15TW8006N	15TW8006S
80	7	15TW8007N	15TW8007S
80	8	15TW8008N	15TW8008S

### Standard Wall      Standard Wall with spiral reinforcement

Length (cm)	Diameter (mm)	Catalogue No.	Catalogue No.
20	6	15SW2006N	-
20	7	15SW2007N	-
40	5	15SW4005N	-
50	6	15SW5006N	15SW5006S
50	7	15SW5007N	15SW5007S
50	8	15SW5008N	15SW5008S
70	5	15SW7005N	-
80	6	-	15SW8006S
80	7	-	15SW8007S
80	8	-	15SW8008S

**JOTEC<sup>®</sup>**  
SOLUTIONS FOR VASCULAR DISEASE

**JOTEC AG**  
Luzernerstr. 91  
CH-5630 Muri  
T +41 (0) 56 670 91 - 00  
F +41 (0) 56 670 91 - 02

**JOTEC CARDIOVASCULAR SL**  
Av. Castilla 2, P. E. San Fernando  
Edificio Italia – planta baja  
E-28830 S. Fernando de Henares (Madrid)  
T +34 (0) 91 - 648 70 20  
F +34 (0) 91 - 656 17 73

**JOTEC GmbH**  
Lotzenäcker 23  
D-72379 Hechingen  
T +49 (0) 74 71 / 922 - 0  
F +49 (0) 74 71 / 922 - 100

**JOTEC Polska Sp. z o.o.**  
ul. Pory 78  
PL-02-757 Warszawa  
T +48 (0) 22 456 19 69  
F +48 (0) 22 456 18 99

**JOTEC s.r.l.**  
Vicolo Valtellina n.15  
I-20092 Cinisello Balsamo (MI)  
T +39 02 91090491  
F +39 02 66014455